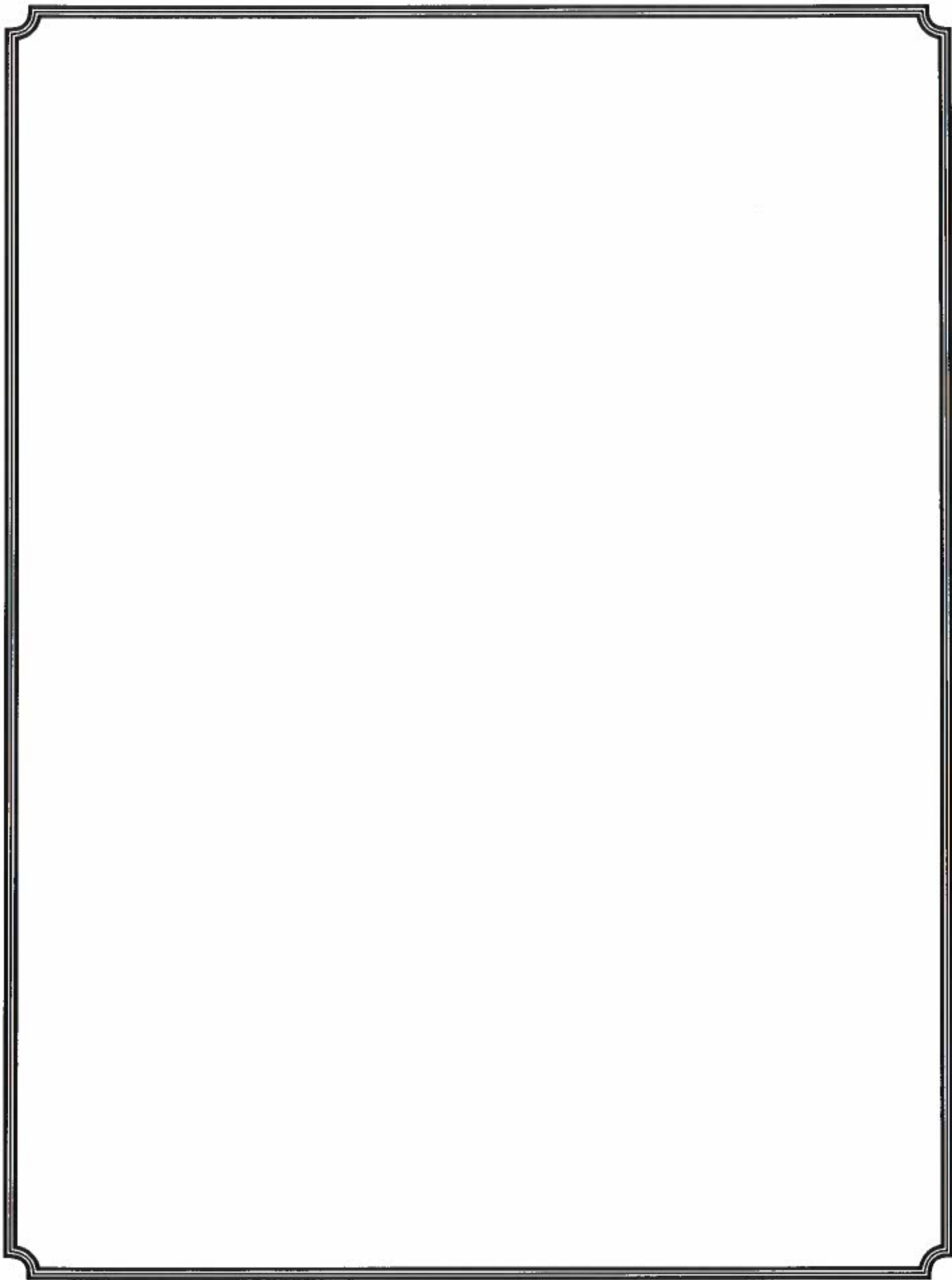


Original Structure

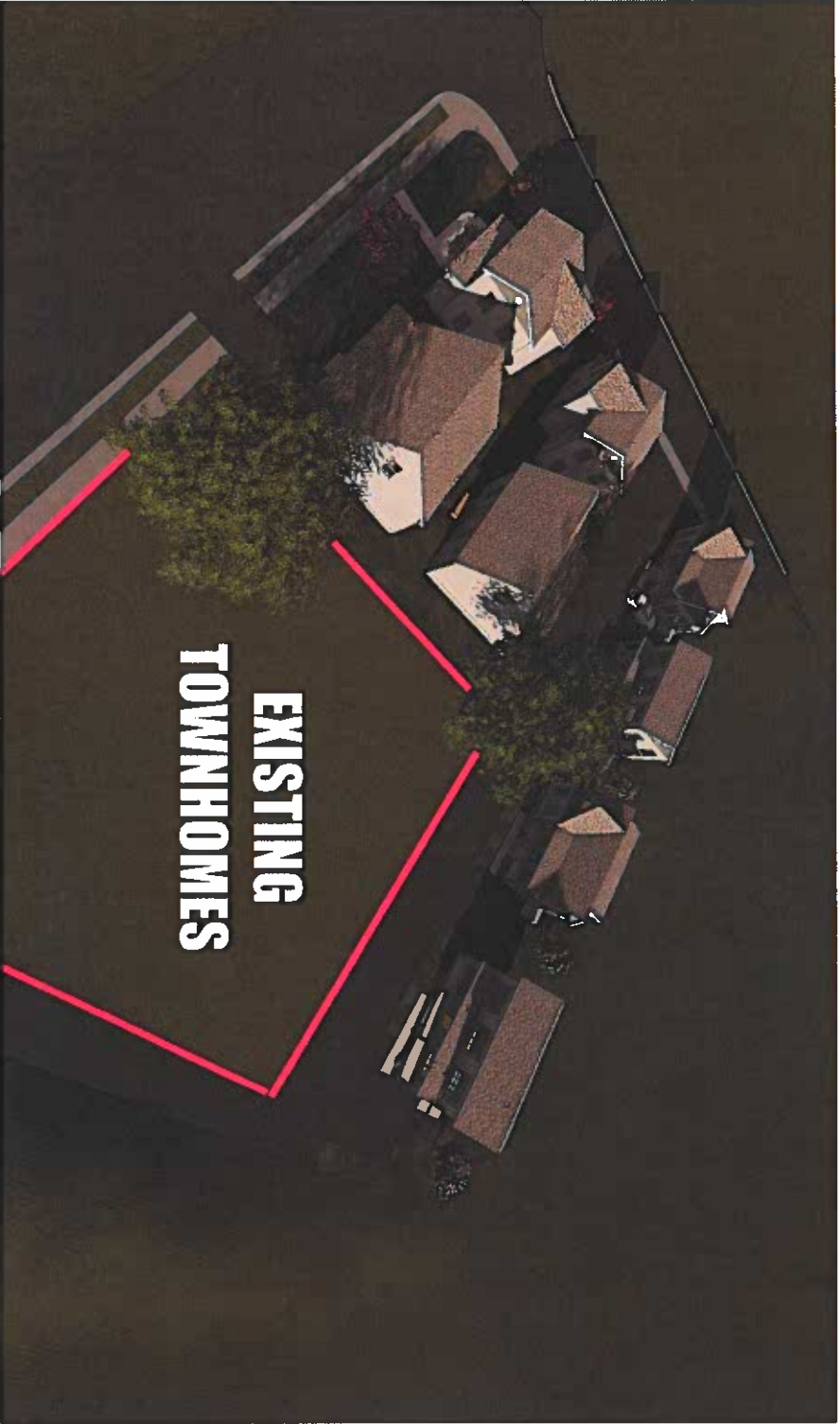






Cottages of Leonardtown





**EXISTING
TOWNHOMES**

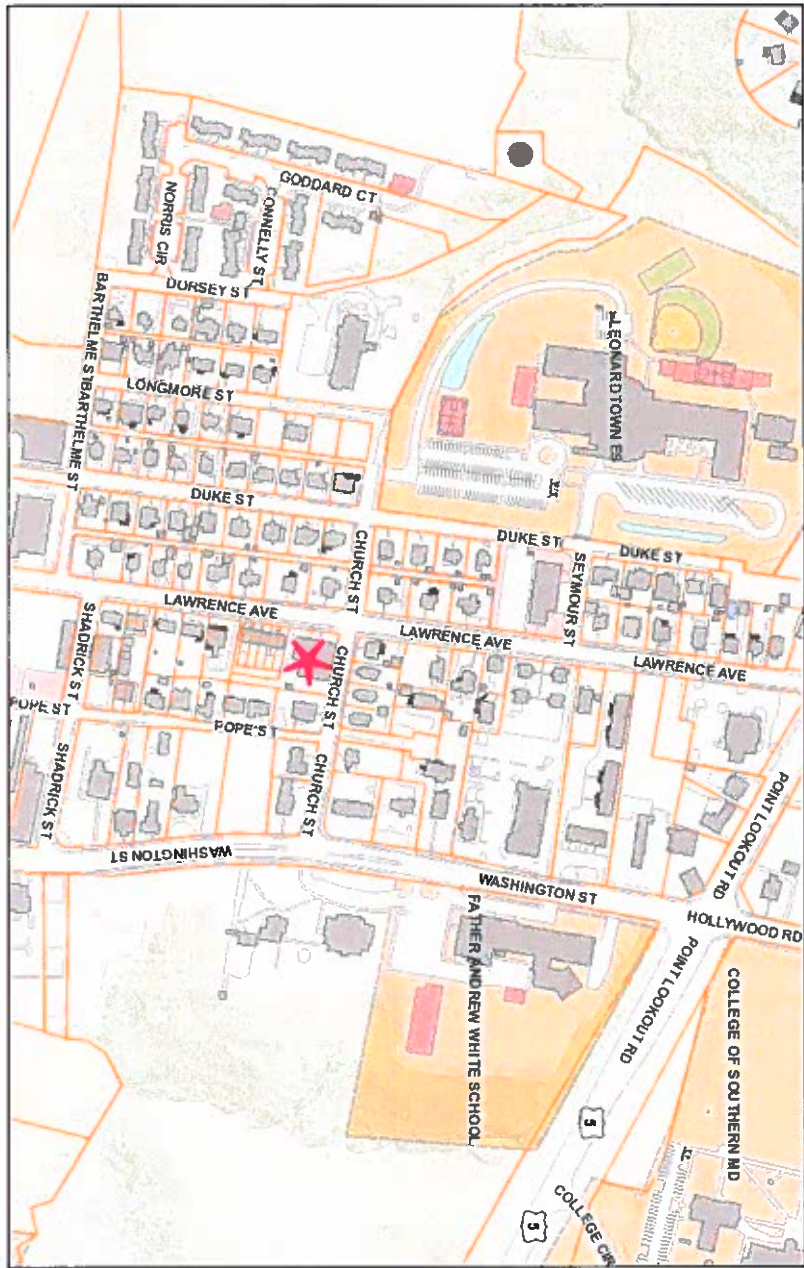




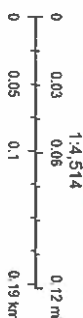
300 Foot Aerial



ArcGIS Web Map

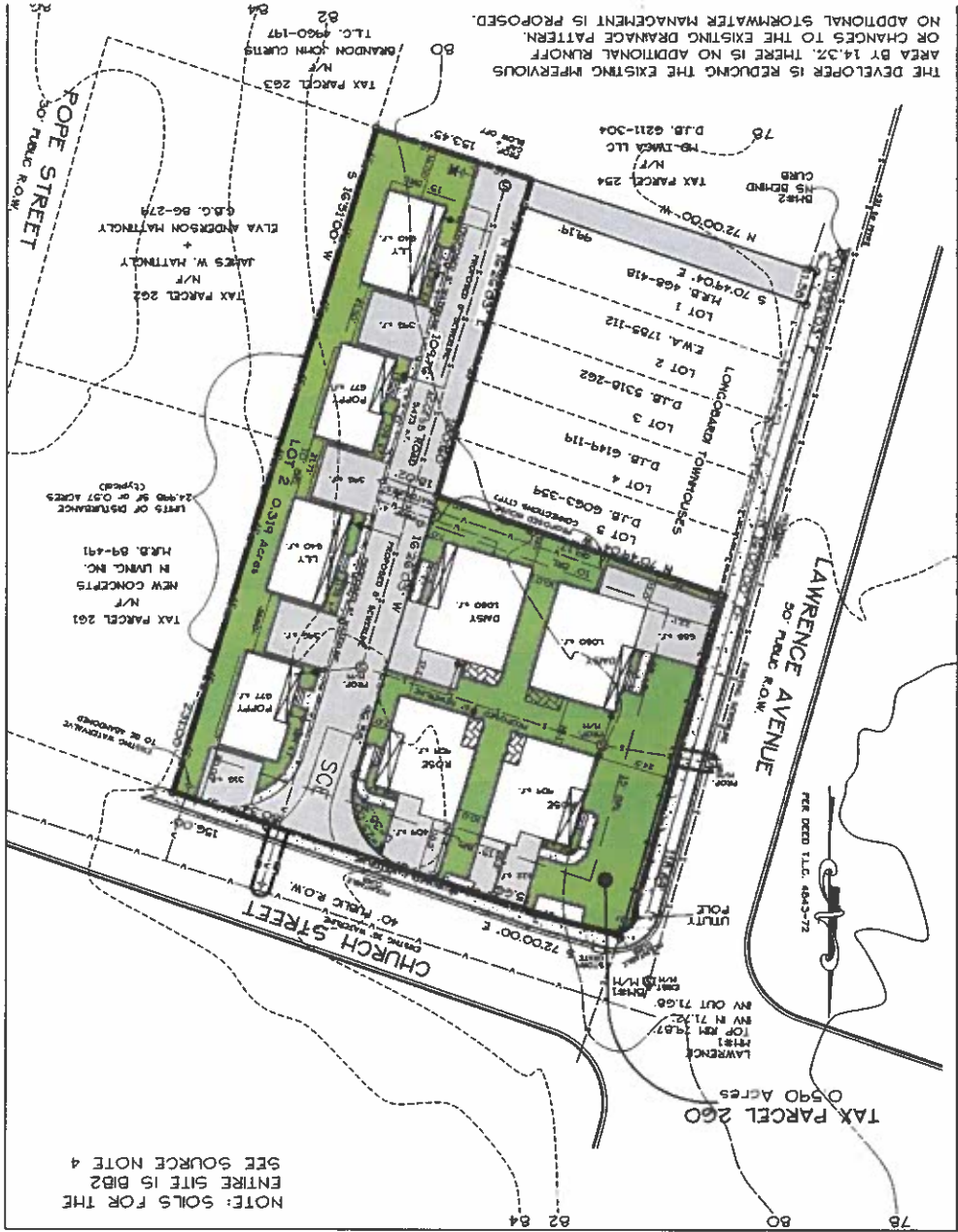


9/14/2023, 2:51:15 PM
Property Boundaries



Printed from the Public GIS Map
Provided by the St. Mary's County Government

Proposed Site Plan



Rear Buffer

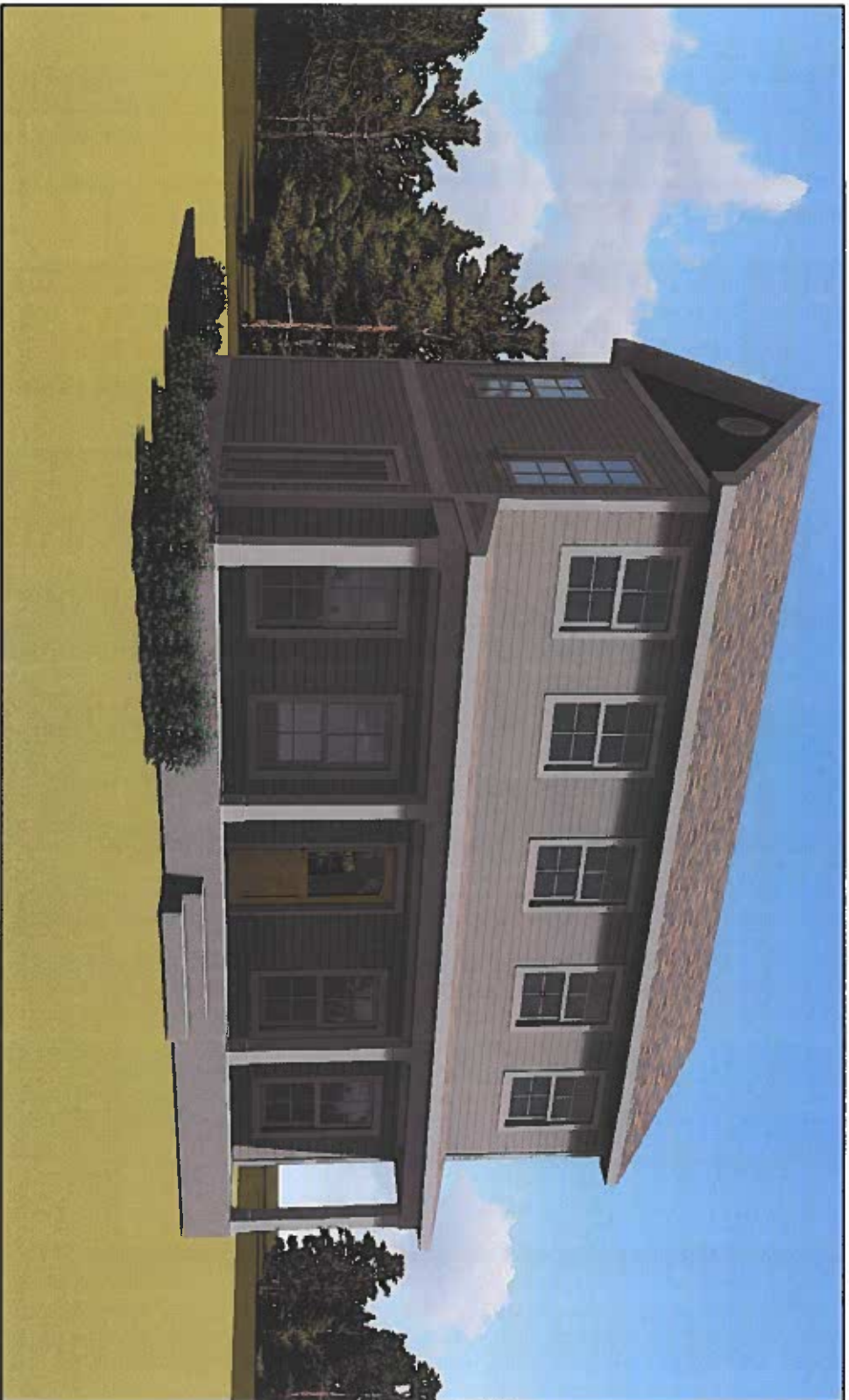


Street View

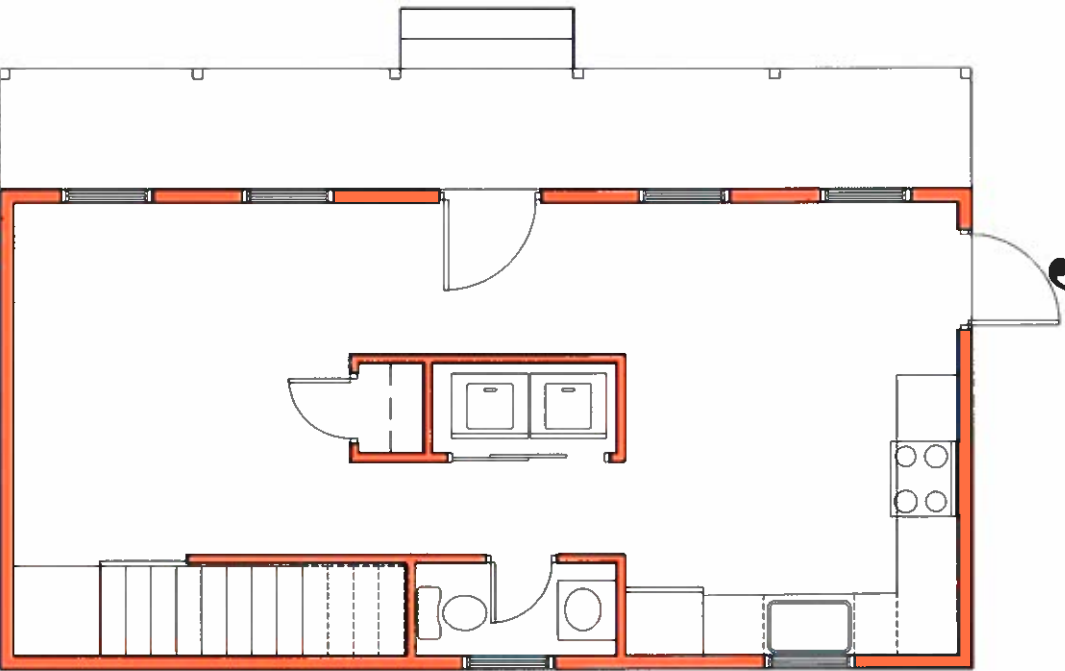
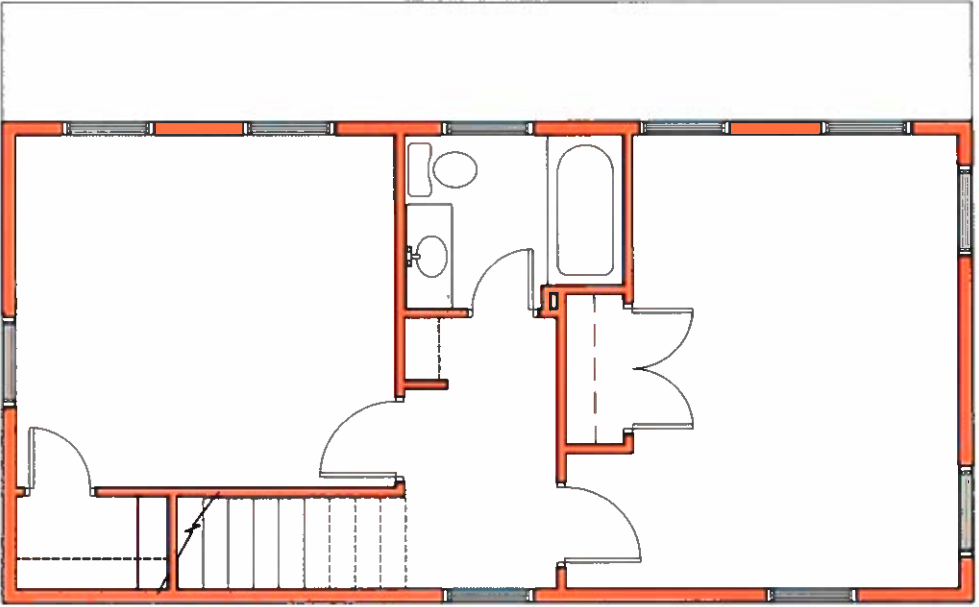




The Lilly



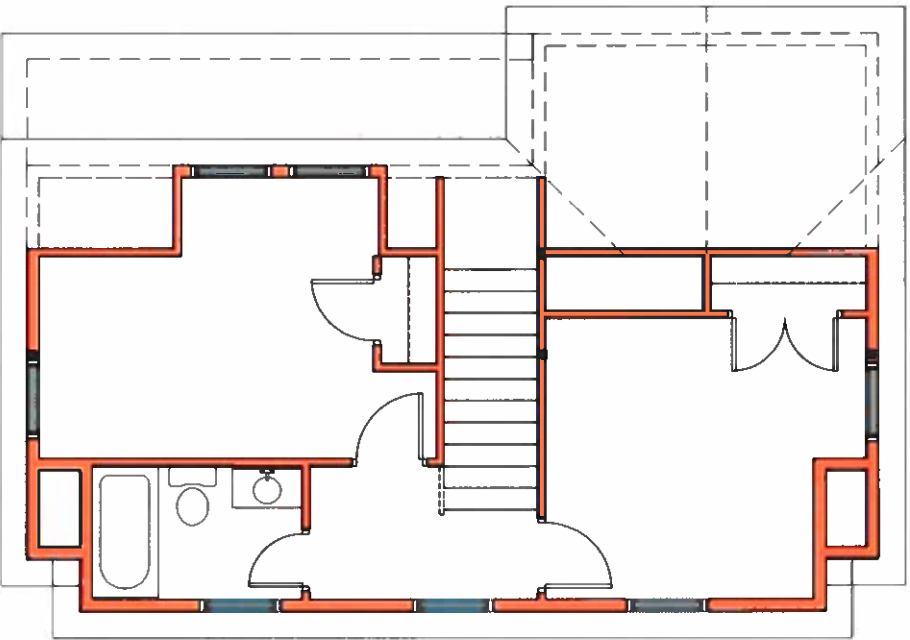
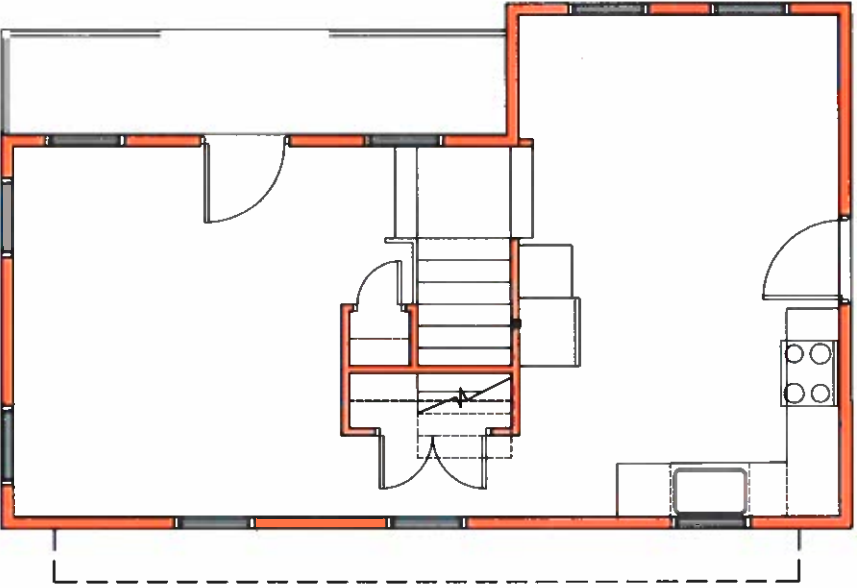
The Lilly



The Poppy



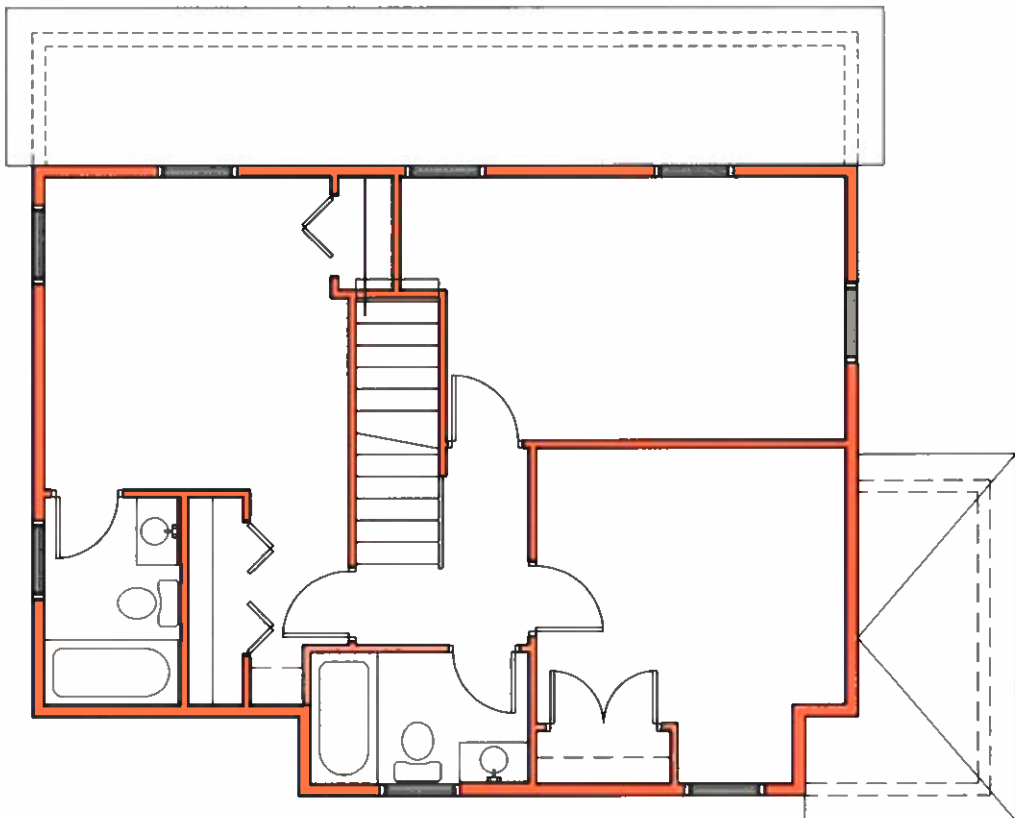
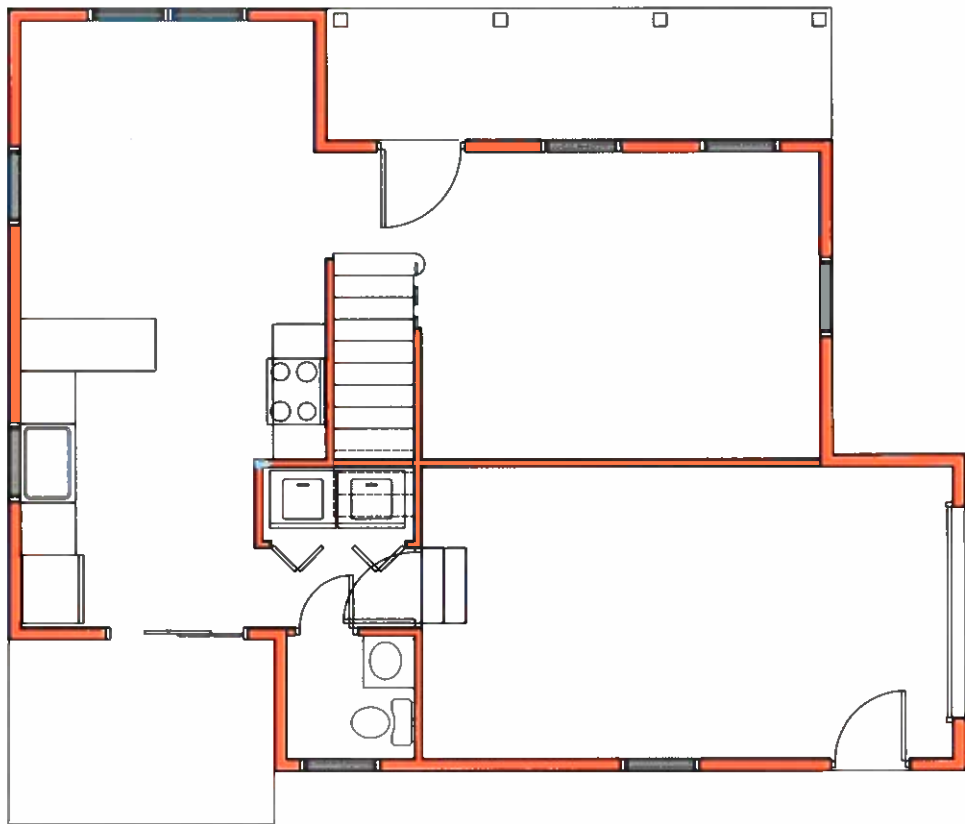
The Poppy



The Rose



The Rose



The Daisy



The Daisy

