

REFERENCE GRID A B C D E F G H I J K L M N O

SOLTESZ, INC.
 WALDORF OFFICE
 401 Post Office Road, Suite 103
 Waldorf, MD 20602
 P. 301.870.2166 F. 301.870.2884
 www.solteszco.com

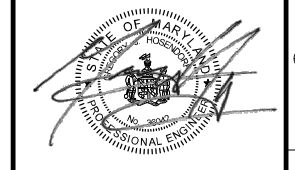
Engineering
 Surveying
 Planning
 Environmental Sciences

NO.	REVISIONS	BY	DATE

MISS UTILITY NOTE
 INFORMATION CONCERNING EXISTING UNDERGROUND UTILITIES WAS OBTAINED FROM AVAILABLE RECORDS. THE CONTRACTOR MUST DETERMINE THE EXACT LOCATION AND ELEVATION OF ALL EXISTING UTILITIES AND UTILITY CROSSINGS BY DIGGING TEST PITS BY HAND, WELL IN ADVANCE OF THE START OF EXCAVATION. CONTACT "MISS UTILITY" AT 1-800-257-7777, 48 HOURS PRIOR TO THE START OF EXCAVATION. IF CLEARANCES ARE LESS THAN SHOWN ON THIS PLAN OR TWELVE (12) INCHES, WHO-EVER IS LESS, CONTACT THE ENGINEER AND THE UTILITY COMPANY BEFORE PROCEEDING WITH CONSTRUCTION. CLEARANCES LESS THAN NOTED MAY REQUIRE REVISIONS TO THIS PLAN.

OWNER / DEVELOPER / APPLICANT
 QUALITY BUILT HOMES, INC.
 5431 KETCH ROAD
 PRINCE FREDERICK, MD 20678
 410-536-6008
 RODNEY GERTZ

PROFESSIONAL CERTIFICATION
 I HEREBY CERTIFY THAT THESE DOCUMENTS WERE PREPARED OR APPROVED BY ME, AND THAT I AM A DULY LICENSED PROFESSIONAL ENGINEER UNDER THE LAWS OF THE STATE OF MARYLAND.
 LICENSE NO. 35942 EXPIRATION DATE: 8/26/2024



11/14/2023

ROAD PLAN 1
SITE DEVELOPMENT PLAN
THE MEADOWS AT
TOWN RUN
SECTION II, PHASE 2 - 74 TOWNHOMES
 THIRD (3RD) ELECTION DISTRICT, ST. MARY'S COUNTY, MARYLAND

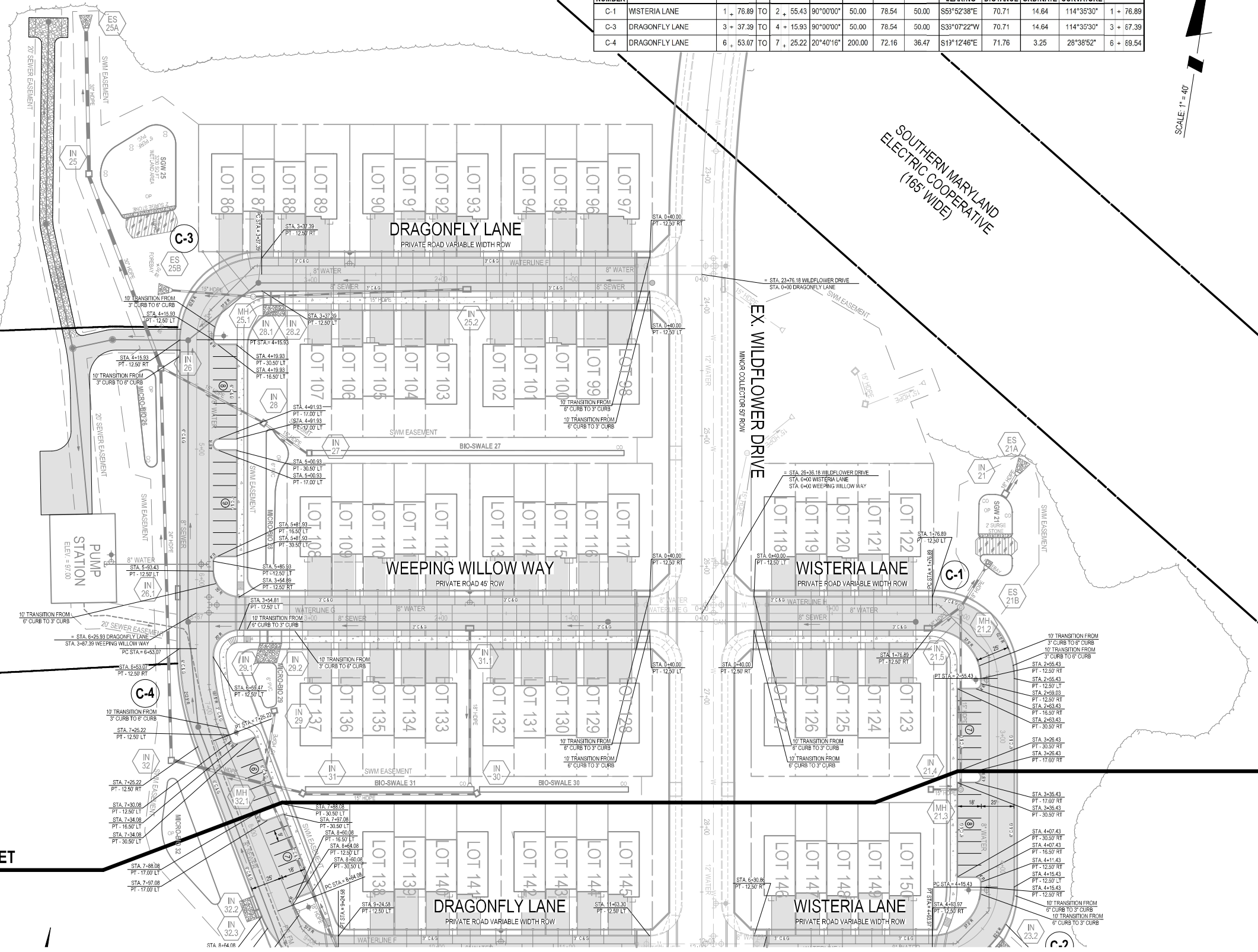
TAX MAP 32 / 175	ZONING CATEGORY L-PUDM
WATER & SEWER CATEGORY TBD	GRID 12
SITE DATUM HORIZONTAL: NAD 83 VERTICAL: NAVD 88	LIBER / FOLIO 2377 / 174
DATE: 11/14/2023 DESIGNED: GJH ENGINEER: GJH, JC CHECKED: GJH CAD STD'S VERSION: V8 / NCS	
SHEET 4 OF 41	
PROJECT NO. 1480-08-00	

CURVE TABLE

CURVE NUMBER	ROAD NAME	P.C. STA	TO	P.T. STA	DELTA	RADIUS	LENGTH	TANGENT	CHORD BEARING	CHORD DISTANCE	MIDDLE ORDINATE	DEGREE OF CURVATURE	PI
C-1	WISTERIA LANE	1 + 76.89	TO	2 + 55.43	90°00'00"	50.00	78.54	50.00	S63°52'38"E	70.71	14.64	114°35'30"	1 + 76.89
C-3	DRAGONFLY LANE	3 + 37.39	TO	4 + 15.93	90°00'00"	50.00	78.54	50.00	S33°07'22"W	70.71	14.64	114°35'30"	3 + 67.39
C-4	DRAGONFLY LANE	6 + 53.07	TO	7 + 25.22	20°40'16"	200.00	72.16	36.47	S13°12'46"E	71.76	3.25	28°38'52"	6 + 89.54

SCALE: 1" = 40'

SOUTHERN MARYLAND
 ELECTRIC COOPERATIVE
 (165' WIDE)



N/F
 BENNETT HOMES LLC
 TM 32, PARCEL 14
 L2801 F713
 FARMSTEAD 1

PART OF GREEN HILLS
 LOTS 4-7
 PLAT BOOK 28 PAGE 88

MATCHLINE - SEE PREVIOUS SHEET
 MATCHLINE - SEE NEXT SHEET

The original of this drawing document was prepared by Soltesz, Inc. (SOLTESZ). If this document was not obtained directly from Soltesz, Inc. or its authorized electronic, SOLTESZ cannot guarantee that unauthorized changes and/or alterations were not made by others. If verification of the information contained herein is needed, contact should be made directly with SOLTESZ. SOLTESZ makes no warranties, express or implied, concerning the accuracy of any information that has been transmitted by electronic means.